

6 CITY CENTER - PORTLAND, ME



3rd FLOOR EXECUTIVE OFFICE SUITES

- Private lockable offices of various sizes. Tenants can choose to lease one or several offices
- Complete set of executive furniture including executive chair, chair mat, 2 guest chairs, artwork, and file storage
- Ongoing building maintenance and janitorial
- Fully furnished kitchen/breakroom with complimentary gourmet coffees and teas
- 24/7 secure electronic access to the building and office
- Ability to add or expand offices or workstations when needed
- Use of our spacious boardroom fully furnished with the latest technology and accessories
- Professionally furnished and staffed reception & waiting area
- State of the art telephone system with unlimited VOIP local and long distance
- Customized telephone answering, forwarding and voicemail services
- Utilities include heat, AC, electricity & water
- Short or long term lease agreements to suit tenant requirements
- Building directory listing
- Use of executive center address and fax number for your business cards, stationery, etc.
- Shower facilities and well-appointed his/her bathrooms
- Business mail service; metered mail gets sent out daily, incoming mail sorted and delivered to you
- Use of networked copier, printer and scanner
- Overnight delivery services—incoming and outgoing
- WiFi and hard wired high speed internet
- Office supply and administrative support services available
- Free notary services on site
- Timely access to IT support

For more information:
Drew Swenson
207.221.2359

PARAGON 
COMMERCIAL REAL ESTATE

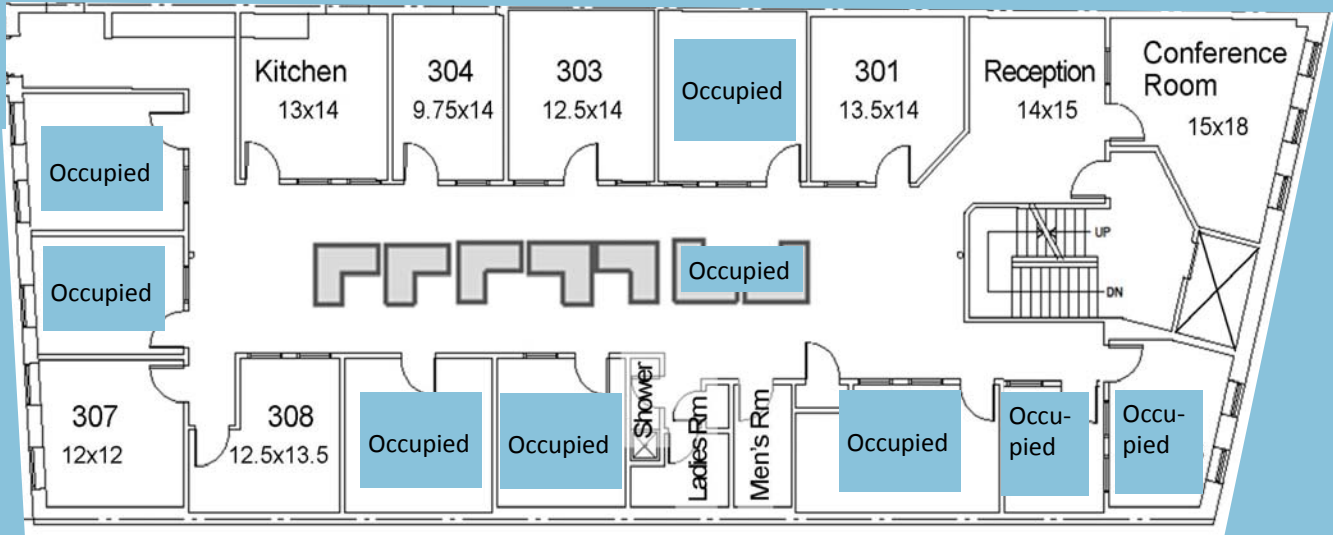
6 CITY CENTER—PORTLAND, ME

3rd FLOOR EXECUTIVE OFFICE SUITES

Photo Gallery



6 CITY CENTER - PORTLAND, ME



3rd FLOOR EXECUTIVE OFFICE SUITES

SUITE NUMBER:	DIMENSIONS:	MONTHLY RATE (MODIFIED GROSS):
Suite 301	13.5' x 14'	\$ 925.00 per month
Suite 302 (Available May 2016)	14' x 14'	\$ 925.00 per month
Suite 303	12.5' x 14'	\$ 925.00 per month
Suite 304	9.75' x 14'	\$ 900.00 per month
Suite 305	12.5' x 11'	\$ 1,100.00 per month
Suite 306	9.5' x 13'	\$ 1,100.00 per month
Suite 307	12' x 12'	\$ 1,100.00 per month
Suite 308	12.5' x 13.5'	\$ 925.00 per month
Suite 309	12.5' x 13'	\$ 825.00 per month
Suite 310	12' x 11.25'	\$ 650.00 per month
Suite 311	18' x 10.5'	\$ 1,200.00 per month
Suite 312	8.5' x 10'	\$ 600.00 per month
Suite 313	9.5' x 13.5'	\$ 1,100.00 per month
Cubicles	5' x 6'	\$ 350.00 per month